

VESTAL 

.....
M E T R O N O M E

WARRANTY

Your VESTAL limited warranty covers defects in materials and workmanship for a period of three years from the date of purchase. The warranty does not cover the watch case, battery, strap, bracelet, crystal and crown. Damage resulting from improper use, accidents, and normal wear and tear is not covered. Water damage is not covered unless the watch is marked 10 atm water resistant. VESTAL's warranty is void if the product is disassembled in any manner by any party other than a certified watch repair professional.

If you live in North America and the watch is defective, please call (949) 631-7036 or email warranty@vestalwatch.com for a Return Authorization (RA) number. Watches sent back to us without a Return Authorization (RA) number will not receive service and will be shipped back at owner's expense.

RETURN ADDRESS: Vestal Watch
ATTN: RA # _____
730 West 17th Street
Costa Mesa, CA 92627

CARING FOR YOUR WATCH BAND

If your watch band is made of leather, try to avoid getting it wet. Water will ruin the leather. In the event that the leather band needs to be replaced, VESTAL has a limited supply of replacements that can be sold back to you.

To keep the integrity of the exclusive design of your Vestal watch, we do not switch bands on watches for other material types or colors. If your VESTAL watch is equipped with a stainless steel band and it has been exposed to salt water, rinse band in fresh water soon after exposure.

In most cases, if you watch stops then it is time for battery replacement. Contact a certified watch repair specialist to have them install a new battery. Always request the watch repair specialist to lubricate and reseal caseback and crown to ensure original water resistance is maintained.

A quick reference guide to help you understand the water resistance ratings for watches and the various activities you can expose your watch to without water damage is below. Watches, no matter what the water resistance is, should not be worn in any hot tub, hot shower, sauna or steam room.

3 ATM = Splash Resistant

Suitable for a light rain or drizzle.

5 ATM = Water Resistant

Suitable for a rain, water balloon fight, or wading in a pool.

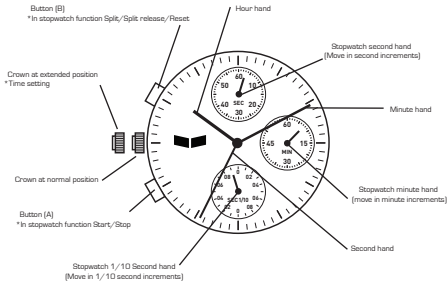
10 ATM =Water Sports Worthy

Suitable for swimming, surfing, diving up to 100 meters.

30 ATM=Submarine Worthy

Suitable for extreme depths of up to 300 meters.

DISPLAY AND CROWN/BUTTON OPERATION



- * The measured time is indicated by the stopwatch hands that move independently of the counter hands.
- * Stopwatch 1/10 second hand moves for the first minute. After one minute, it indicates the measured time when it is stopped.

ADJUSTING THE STOPWATCH HAND POSITION

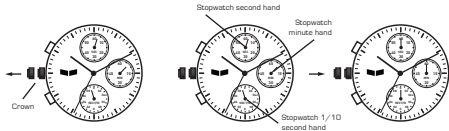
Before setting the time, check if the Stopwatch 1/10 second, second and minute hands are at the "0" (12 o'clock) position. If the stopwatch is in use, press the button in the following order to reset it, and then check if the hands return to "0" position. For detail see "HOW TO USE STOPWATCH".

If the stopwatch is counting: [A] ———> [B]

If the stopwatch is stopped: [B]

If the split time is displayed: [C] ———> [A] ———> [B]

* If either of the stopwatch hands are not at the "0" position, reset them following the procedure below:



1. Pull out the crown

2. Press button [A] or [B] to reset the stopwatch 1/10 second, second and minute hands to "0" position.

3. Push the crown back to the normal position.

* By pressing button [A], set the stopwatch 1/10 second hand

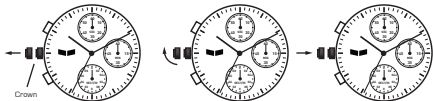
* By pressing button [B], set the stopwatch second and minute hands.

* The stopwatch minute hands moves correspondingly with the stopwatch second hand.

* The hands move quickly if the respective buttons are kept pressed.

TIME SETTING

* Before setting the time, check that the chronograph measurement is stopped.



1. Pull out the crown when the second hand is at the 12 o'clock position. The second hand will stop on the spot.

* Do not press any button. Otherwise, the chronograph hands will move.

2. Turn the crown to set the hour and minute hands to the desired time.

3. Push the crown back in to the normal position in accordance with the signal.

HOW TO USE THE STOPWATCH

- * The measured time is indicated by the stopwatch hands that move independently of the center hands.
- * The stopwatch can measure up to 60 minutes in 1/10 seconds

Standard Measurement

Example: 100m race (Press the buttons in the following order: [A] → [A] → [B])

Start → Stop (Finish) → Reset (Reset to "0'0")



Accumulated elapsed time measurement

Example: Basketball game (Press the button in the following order:

[Start of game] → [Time out/Restart game] → [Game over] → [Reset])



5 minutes, 10 8/10 seconds

20 minutes, 00 seconds

- * Restart and stop of the stopwatch can be repeated as many times as necessary by pressing button (A).

Split time measurement

Example: 5,000m race (Press the buttons in the following order: [A] → [B]/[B] → [A] → [B])

[Start] → [Split/Split Release] → [Stop] → [Reset]



2 minutes, 50 seconds

15 minutes, 10 8/10 seconds

- * Measurement and release of the split time can be repeated as many times as necessary by pressing button (B).

VESTAL WATCH

730 WEST 17TH STREET
COSTA MESA CALIFORNIA 92627
TEL: 949.631.7036 FAX: 949.631.7550

INFO@VESTALWATCH.COM
WWW.VESTALWATCH.COM