



Vestal

USS OBSERVER CHRONO

## WARRANTY

Your VESTAL limited warranty covers defects in materials and workmanship for a period of three years from the date of purchase. The warranty does not cover the watch case, battery, strap, bracelet, crystal and crown. Damage resulting from improper use, accidents, and normal wear and tear is not covered. Water damage is not covered unless the watch is marked 10 atm water resistant. VESTAL's warranty is void if the product is disassembled in any manner by any party other than a certified watch repair professional.

If you live in North America and the watch is defective, please call (949) 631-7036 or email [warranty@vestalwatch.com](mailto:warranty@vestalwatch.com) for a Return Authorization (RA) number. Watches sent back to us without a Return Authorization (RA) number will not receive service and will be shipped back at owner's expense.

RETURN ADDRESS: Vestal Watch  
**ATTN: RA #** \_\_\_\_\_  
730 West 17th Street  
Costa Mesa, CA 92627

## CARING FOR YOUR WATCH BAND

If your watch band is made of leather, try to avoid getting it wet. Water will ruin the leather. In the event that the leather band needs to be replaced, VESTAL has a limited supply of replacements that can be sold back to you.

To keep the integrity of the exclusive design of your Vestal watch, we do not switch bands on watches for other material types or colors. If your VESTAL watch is equipped with a stainless steel band and it has been exposed to salt water, rinse band in fresh water soon after exposure.

In most cases, if you watch stops then it is time for battery replacement. Contact a certified watch repair specialist to have them install a new battery. Always request the watch repair specialist to lubricate and reseal case back and crown to ensure original water resistance is maintained.

A quick reference guide to help you understand the water resistance ratings for watches and the various activities you can expose your watch to without water damage is below. Watches, no matter what the water resistance is, should not be worn in any hot tub, hot shower, sauna or steam room.

**3 ATM = Splash Resistant**

Suitable for a light rain or drizzle.

**5 ATM = Water Resistant**

Suitable for a rain, water balloon fight, or wading in a pool.

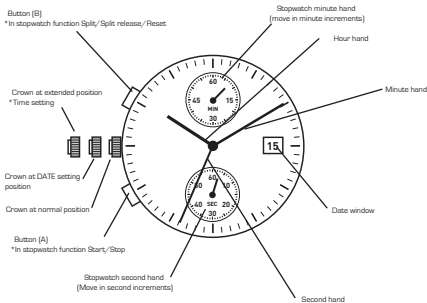
**10 ATM =Water Sports Worthy**

Suitable for swimming, surfing, diving up to 100 meters.

**30 ATM=Submarine Worthy**

Suitable for extreme depths of up to 300 meters.

# DISPLAY AND CROWN/BUTTON OPERATION



\* The measured time is indicated by the stopwatch hands that move independently of the counter hands.

# ADJUSTING THE STOPWATCH HAND POSITION

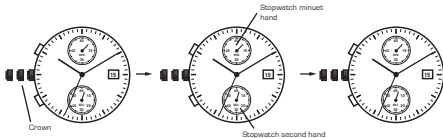
Before setting the time, check if the Stopwatch 1/10 second, second and minute hands are at the "0" (12 o'clock) position. If the stopwatch is in use, press the button in the following order to reset it, and then check if the hands return to "0" position. For detail see "HOW TO USE STOPWATCH".

If the stopwatch is counting: [A] → [B]

If the stopwatch is stopped: [B]

If the split time is displayed: [C] → [A] → [B]

\* If either of the stopwatch hands are not at the "0" position, reset them following the procedure below.



1. Pull out the crown to time setting position, second click.

2. Press Button [A] or [B] to reset the stopwatch second and minute hands to "0" position.

3. Push the crown back to the normal position.

\*By pressing Button [A], set the stopwatch second hand.

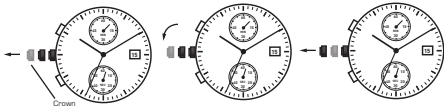
\*By pressing Button [B], set the stopwatch minute hand.

\*The stopwatch minute hand moves correspondingly with the stopwatch second hand.

\*The hands move quickly if the respective buttons are kept pressed.

# TIME SETTING

\* Before setting the time, check that the chronograph measurement is stopped.



1. Pull out the crown when the crown reaches the first click.  
Second click

2. Turn the crown clockwise until the previous day's date appears.

3. Pull out the crown to the second click when the second hand is at the 12 o'clock position. It will stop on the spot and advance the hour and minute hands by turning the crown.  
[check that AM/PM is set correctly.]



4. Push the crown back in to the normal position in accordance with the signal.

\* Do not set the date between 9:00 PM and 1:00 AM.

otherwise, the day may not change properly. If it is necessary to set the date during that time period, first change the time to any time outside it, set the date and then reset the correct time.

# HOW TO USE THE STOPWATCH

- \* The measured time is indicated by the stopwatch hands that move independently of the center hands.
- \* The stopwatch can measure up to 60 minutes in 1/10 seconds

## Standard Measurement

Example: 100m race (Press the buttons in the following order: [A] → [A] → [B])

Start → Stop (Finish) → Reset (Reset to "0'0")



## Accumulated elapsed time measurement

Example: Basketball game (Press the button in the following order:

[Start of game] → [Time out/Restart game] → [Game over] → [Reset])

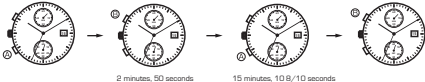


- \* Restart and stop of the stopwatch can be repeated as many times as necessary by pressing button [A].

## Split time measurement

Example: 5,000m race (Press the buttons in the following order: [A] → [B]/[B] → [A] → [B])

[Start] → [Split/Split Release] → [Stop] → [Reset]



- \* Measurement and release of the split time can be repeated as many times as necessary by pressing button [B].

# VESTAL WATCH

730 WEST 17TH STREET  
COSTA MESA CALIFORNIA 92627  
TEL: 949.631.7036 FAX: 949.631.7550

INFO@VESTALWATCH.COM  
WWW.VESTALWATCH.COM